



## Rotax MAX Challenge Technical Regulation 2018

Bulletin no. 2, 2018 03 29

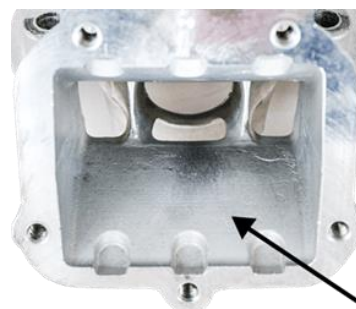
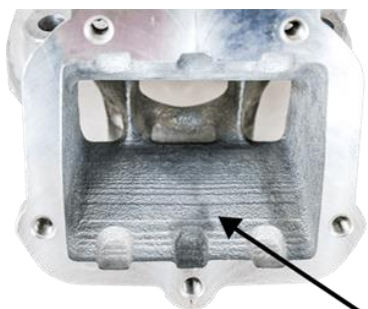
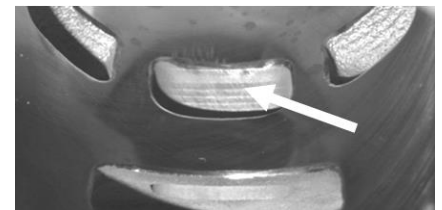
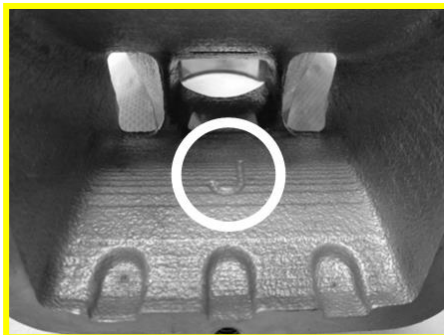
Addendum/changes (highlighted yellow) to RMC Technical Regulations 2018, Edition 2018 01 22

### 5.5. Cylinder surfaces

Cylinders marked 223 994 and 223 993 and showing a cast letter marked (e.g. "J") in the inlet port show a fully CNC machined exhaust port and a fully CNC machined top edge of the central boost port. Cylinders marked 223 994 and 223 993 may show in the inlet port a linear texture.

Cylinders marked 223 994 and 223 993 with linear texture in the inlet port show a fully CNC machined exhaust port and a fully CNC machined top edge of the central boost port.

Cylinders marked 613 933 may show in the inlet port a linear texture.



linear textured cast finish surface



normal cast finish surface

### 6.11 Fuel pump, fuel filter

MIKUNI diaphragm pump, (see picture) must be used and must be mounted as shown in the illustration.

125 Junior MAX and 125 MAX

Fuel pump must be mounted on the bottom side of the support bracket for the intake silencer (left illustration).

125 MAX DD2

Fuel pump must be mounted on the support bracket, marked 651055 or 651056, attached to the clutch cover (right illustration).

Mounting the fuel pump with the two original rubber buffers to the chassis is an allowed option. In this case the fuel pump must be mounted below the inlet center line of the carburetor.

